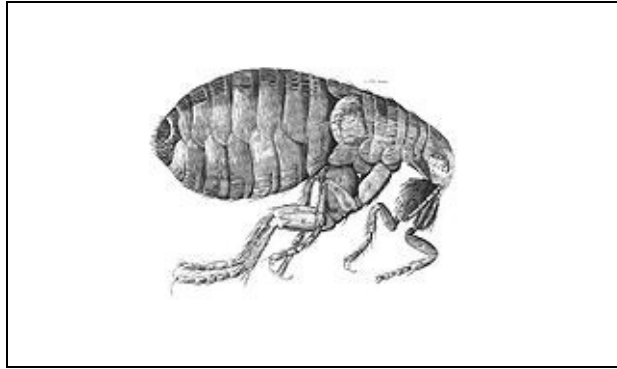


## INFORMATION SHEET 01 ~ FLEAS

CAT FLEA ~ (Ctenocephalides Felis)  
DOG FLEA~( Ctenocephalides Canis)  
HUMAN FLEA ~(Pulex irritans)



### DESCRIPTION

There are about 50 types of flea to be found in the U.K. each common to a particular host. The most common fleas are the Cat and Dog flea. The human flea is now quite uncommon. However, if the normal host is not available or if it is opportune it is normal for the flea to bite other mammals. It is usually the case that human flea bites are caused by the cat or dog flea.

In general terms the flea is dark brown to black in colour, very laterally compressed and about 2mm in length. They walk awkwardly on flat surfaces, having long, well developed jumping hind legs.

### HABITS

Fleas are very mobile, and, using their hind legs, can jump exceptionally well. Being laterally thin and having a small pointed front they can move readily in and amongst hair, fur or feathers of their host.

Fleas bites can show as small red spots with a red 'halo' usually around the ankle and lower legs (Cat fleas) or around the waist and abdomen (Human Fleas). The adult flea can often be seen moving amongst the hairs of the host.

### LIFE CYCLE

Eggs – 0.5mm in size, oval and translucent, are laid in the bedding or clothing of the host. These eggs may fall off the host and fall into floorboard crevices or into the seams of mattresses.

Two to three days later white legless larvae emerge to feed on shed skin scales, dust, fluff etc. They moult two or three times, reaching a maximum length of 5mm. At which point it forms a cocoon to emerge as an adult about a month later. **PLEASE NOTE** : The adult flea may remain within the cocoon until a suitable host passes, detecting it by vibrations. The adult flea may live up to two years.

### HEALTH CONCERNS

There is little evidence to suggest the cat or dog flea transmit serious illness to humans and the disease commonly linked with fleas, **THE PLAGUE**, is, in fact, associated with Oriental or Tropical rat fleas and the black rat (Ship rat).

Their bites are very irritating especially to children. The ability to remain dormant is of significance especially if pets and bedding have been removed to eradicate infestations only to discover continuing problems when adult cocoon fleas emerge when stimulated.

### CONTROL

Regular and frequent use of vacuum cleaners in the home including animal bedding, not forgetting the disposal of the vacuum cleaner bags.

Pets should be frequently checked for the presence of fleas and be treated by a vet.

## **TREATMENT**

**CROYDON PEST CONTROL** uses residual insecticidal sprays -Only fully qualified Pest control technicians can use materials not available to the Public.

Together we can improve our environment.

## **ADDITIONAL INFORMATION**

Please do not hesitate to contact our Customer Services on telephone number **020 8765 1301**